

· WE ARE ·
MANUFACTURERS
CERTIFIED

EX CABLE GLANDS

FOR HAZARDOUS AREAS
ATEX & IECEX

Zones 1, 2, 21 and 22



CABLE GLANDS	4
CABLE GLANDS UNARMoured EX D IP66 - IP68	5
CABLE GLANDS UNARMoured EX E IP66 - IP68	5
DOUBLE COMPRESSION CABLE GLANDS ARMoured EX D/E IP66 - IP68	6
CABLE GLANDS POLYAMIDE EX E IP68	7
CABLE GLANDS ATEX INCREASED SECURITY POLYAMIDE EX I IP68	8
PLUGS	9
STOPPER PLUG EX D/E IP66 - IP68	9
PLUG POLYAMIDE EX E IP66	10
ADAPTERS	11
ADAPTER REDUCER EX D/E IP66 - IP68	11
ADAPTER ENLARGER EX D/E IP66 - IP68	12
REDUCER - ENLARGER	13
REDUCER EX D/E IP66 - IP68	13
ENLARGER EX D/E IP66 - IP68	14
VALVE	15
AUTOMATIC BREATHER AND DRAINAGE HAZARDOUS AREA VALVES ATEX IP66	15
ACCESSORIES	16
SHROUD IP66 - IP68	16
EARTH TAG	16



Paso del Prao, 6, 01320 Oyón (Álava), Spain
Telf. +34 945 601 381
atex@atexdelvalle.com | www.atexdelvalle.com

Delvalle, wide experience in manufacturing solutions for hazardous area



WE PUT AT YOUR DISPOSAL

We offer over **45 years** providing hazardous area **solutions** to demanding customers who require very specific characteristics and behaviour according to the sector and their needs.

WHEREVER YOU GO

We are committed to working closely with our customers, providing them with exceptional service and offering an advanced and **extensive range of hazardous area products** with very competitive prices.

CONSULTING & ENGINEERING

Atex Delvalle adapts to our clients' needs by offering hazardous-area systems. Atex-delvalle are the leading certified assembler of Ex junction boxes, our **customized services**, **experienced design** and drafting 3D support.

HIGH STANDARD OF QUALITY AND SERVICES

We only use materials provided by companies who offer the very highest quality, suitable and certified products. Our success is due to **top quality** assurance: ISO 9001, SGS, UL, TÜV, ISO 14000, Ohsas 1800, Atex, IECEx.

 **100%**
Entirely designed
and manufactured
in Europe



CONTACT US

Confidentiality, reliability & quality

www.atexdelvalle.com
atex@atexdelvalle.com
+34 945 601 381

ALSO ONLINE



Please contact our technical sales department.

A team of professionals with high experience and ability to solve all your queries.





Zones 1, 2, 21 and 22

CABLE GLANDS EX D/E **ATEX**



Examples

The Most Powerful Security

Cable glands, stopper plugs, adapters, reducers,... ATEX made by ATEX Delvalle are used for passing, blocking and holding cables between two compartments, such as ATEX junction boxes, ATEX cabinets and electrical boxes or devices requiring sealing against dust, dirt or water in **hazardous areas**, places considered as potentially explosive, such all zones: 1, 2, 21 and 22.

➔ [FOR MORE INFORMATION CLICK HERE](#)



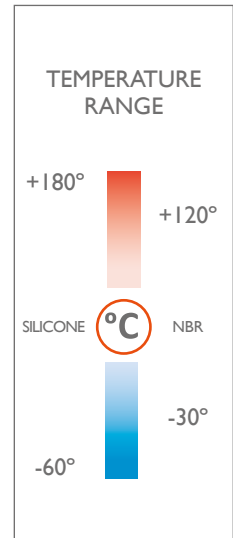
CABLE GLANDS EX D/E ATEX

CABLE GLANDS NICKEL-PLATED BRASS AND STAINLESS STEEL

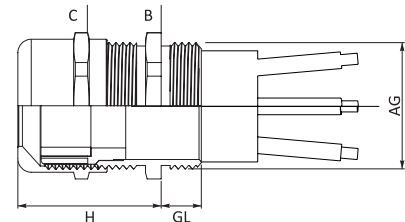
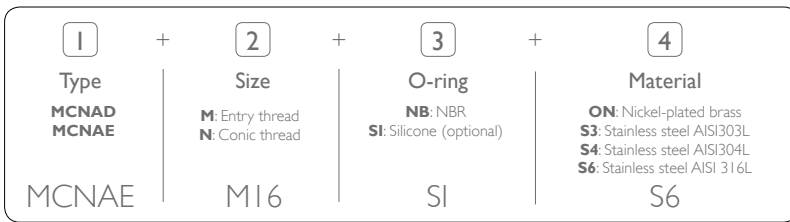
CABLE GLANDS UNARMOURED EX D / EX E IP66 - IP68



- Material:
 - Nickel-plated brass
 - Stainless steel AISI303
 - Stainless steel AISI304L
 - Stainless steel AISI316L
- O-ring: NBR or silicone (optional)
- Ultraviolet (UV) resistance
- Normative and marking:
 - IEP 21 ATEX 0967X
 - II 2G Exd/e IIC Gb II 2D Ex tb IIIC Db I M2 Exd/e I Mb
 - EN 60079-0:2009, 60079-1:2007, 60079-31:2009
- Protection class: IP66 / IP68 (EN 60529)
- Application area:
 - Zones 1, 2, 21 and 22
 - Group Gas IIA, IIB and IIC



Reference configuration. Examples: MCNAE.MI6.SI.S6 or MCNAD.NI-1/4.NB.S4



CABLE GLANDS UNARMOURED EX D / EX E	SIZE	ENTRY THREAD ISO 262 (AG)	CONIC THREAD NPT (AG)	CLAMPING RANGE (mm)		GL (mm)	W (mm)		MINIMUM
				MIN.	MAX.		B	C	
MCNAD	M12 - NI/4	M12x1,5	1/4"	3	6,5	15	14	14	50* / 25**
MCNAD	M16 - N3/8	M16x1,5	3/8"	4	8	15	18	17	50* / 25**
MCNAD	M20 - NI/2	M20x1,5	1/2"	6	12	15	22	22	50* / 25**
MCNAD	M25S - N3/4S	M25Sx1,5	3/4"	10	14	15	27	24	50* / 25**
MCNAD	M25 - N3/4	M25x1,5	3/4"	13	18	15	30	30	50* / 25**
MCNAD	M32 - NI	M32x1,5	1"	13	18	15	34	30	25* / 10**
MCNAD	M40 - NI-1/4	M40x1,5	1 1/4"	18	25	15	43	40	25* / 10**
MCNAD	M50 - NI-1/2	M50x1,5	1 1/2"	22	32	15	55	50	25* / 10**
MCNAD	M63S - N2S	M63Sx1,5	2"	33	44	15	68	64	25* / 10**
MCNAD	M63 - N2	M63x1,5	2"	45	55	15	70	75	25* / 10**
MCNAD	M75S - N2-1/2S	M75Sx1,5	2 1/2"	45	55	15	85	75	10* / 5**
MCNAD	M75 - N2-1/2	M75x1,5	2 1/2"	50	63	20	90	90	10* / 5**
MCNAD	M80 - N3S	M80x2	3"	50	63	20	90	90	10* / 5**
MCNAD	M90 - N3	M90x2	3"	60	70	20	100	100	10* / 5**
MCNAE	M12 - NI/4	M12x1,5	1/4"	3	6,5	6	14	14	50* / 25**
MCNAE	M16 - N3/8	M16x1,5	3/8"	4	8	7	18	17	50* / 25**
MCNAE	M20 - NI/2	M20x1,5	1/2"	6	12	8	22	22	50* / 25**
MCNAE	M25S - N3/4S	M25Sx1,5	3/4"	10	14	8	27	24	50* / 25**
MCNAE	M25 - N3/4	M25x1,5	3/4"	13	18	8	30	30	50* / 25**
MCNAE	M32 - NI	M32x1,5	1"	13	18	9	34	30	25* / 10**
MCNAE	M40 - NI-1/4	M40x1,5	1 1/4"	18	25	9	43	40	25* / 10**
MCNAE	M50 - NI-1/2	M50x1,5	1 1/2"	22	32	9	55	50	25* / 10**
MCNAE	M63S - N2S	M63Sx1,5	2"	33	44	14	68	64	25* / 10**
MCNAE	M63 - N2	M63x1,5	2"	45	55	15	70	75	25* / 10**
MCNAE	M75S - N2-1/2S	M75Sx1,5	2 1/2"	45	55	15	85	75	10* / 5**
MCNAE	M75 - N2-1/2	M75x1,5	2 1/2"	50	63	20	90	90	10* / 5**
MCNAE	M80 - N3S	M80x2	3"	50	63	20	90	90	10* / 5**
MCNAE	M90 - N3	M90x2	3"	60	70	20	100	100	10* / 5**

* Nickel-plated brass

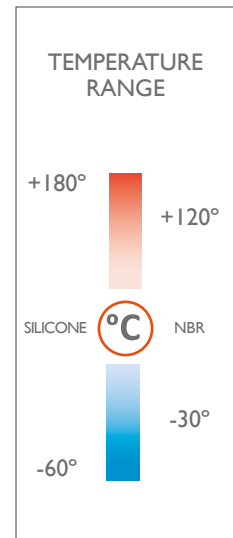
** Stainless steel AISI303L - Stainless steel AISI304L - Stainless steel AISI316L

CABLE GLANDS EX D/E **ATEX**

DOUBLE COMPRESSION CABLE GLANDS ARMoured EX D/E IP66 - IP68

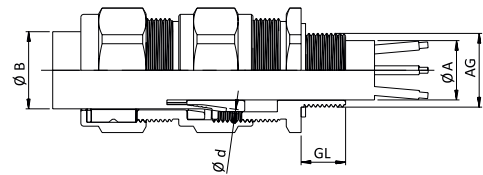


- Material:
 - Nickel-plated brass
 - Stainless steel AISI303
 - Stainless steel AISI304L
 - Stainless steel AISI316L
- O-ring: NBR or silicone (optional)
- Ultraviolet (UV) resistance
- Normative and marking:
 - IE P 2I ATEX 0966X
 - II 2G Exd/e IIC Gb II 2D Ex tb IIIC Db I M2 Exd/e I Mb
 - EN 60079-0:2009, 60079-1:2007, 60079-31:2009
- Protection class: IP66 / IP68 (EN 60529)
- Application area:
 - Zones 1, 2, 21 and 22
 - Group Gas IIA, IIB and IIC



Reference configuration. Examples: MVCGA2.M16.SI.S6 or MVCGA2.NI/2.NB.S3

1	+	2	+	3	+	4
Type		Size		O-ring		Material
MVCGA2		M16		SI		S6
		M: Entry thread N: Conic thread		NB: NBR SI: Silicone (optional)		ON: Nickel-plated brass S3: Stainless steel AISI303L S4: Stainless steel AISI304L S6: Stainless steel AISI 316L



REFERENCES DOUBLE COMPRESSION CABLE GLANDS ARMoured EX D/E												
DOUBLE COMPRESSION CABLE GLANDS ARMoured EX D/E	SIZE	ENTRY THREAD ISO 262 (AG)	CONIC THREADS NPT (AG)	A		B		Ø D		GL (mm)	GL (mm)	MINIMUM
				MIN.	MAX.	MIN.	MAX.	MIN.	MAX.			
MVCGA2	M16 - NI/2S5	M16x1,5	1/2"	3,1	8,6	6,1	13,2	0,8	1,0	15	24	50* / 25**
MVCGA2	M20S - NI/2S	M20x1,5	1/2"	6,1	11,6	9,5	15,9	0,8	1,25	15	24	50* / 25**
MVCGA2	M20 - NI/2	M20x1,5	1/2"	6,5	13,9	12,5	20,9	0,8	1,25	15	30	50* / 25**
MVCGA2	M25S - N3/4S	M25x1,5	3/4"	11,1	19,9	14	22	1,25	1,60	15	38	50* / 25**
MVCGA2	M25 - N3/4	M25x1,5	3/4"	11,1	19,9	18,2	26,2	1,25	1,60	15	38	50* / 25**
MVCGA2	M32 - NI	M32x1,5	1"	18,2	26,2	23,7	33,9	1,6	2,0	15	45	50* / 25**
MVCGA2	M40 - NI 1/4	M40x1,5	1 1/4"	23,7	33,9	27,9	40,4	1,6	2,0	15	55	25* / 10**
MVCGA2	M50S - NI 1/2	M50x1,5	1 1/2"	29,5	38,1	35,2	46,7	2,0	2,5	15	60	25* / 10**
MVCGA2	M50 - N2S	M50x1,5	2"	35,6	44,0	40,4	53,1	2,0	2,5	15	70	25* / 10**
MVCGA2	M63S - N2	M63x1,5	2"	40,1	49,9	45,6	59,4	2,0	2,5	15	75	25* / 10**
MVCGA2	M63 - N21/2S	M63x1,5	2 1/2"	47,2	55,9	54,6	65,9	2,0	2,5	15	80	25* / 10**
MVCGA2	M75S - N21/2	M75x1,5	2 1/2"	52,8	61,9	59	72,1	2,0	2,5	15	90	10* / 5**
MVCGA2	M75 - N3S	M75x1,5	3"	59,1	67,9	66,7	78,5	2,5	3,0	15	100	10* / 5**
MVCGA2	M90 - N3	M90x2,0	3"	66,6	79,9	76,2	90,4	3,0	3,5	15	115	10* / 5**
MVCGA2	M100	M100x2,0	-	76	90	86,1	101,5	3,15	4,0	15	123	10* / 5**
MVCGA2	M115	M115x2,0	-	86	97,9	101,5	110,3	3,15	4,0	15	133	10* / 5**
MVCGA2	M130	M130x2,0	-	97	114,9	114,2	123,3	3,15	4,0	15	146	10* / 5**

* Nickel-plated brass

** Stainless steel AISI303L - Stainless steel AISI304L - Stainless steel AISI316L

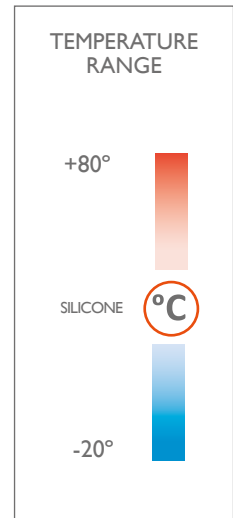
CABLE GLANDS EX D/E **ATEX**

CABLE GLANDS POLYAMIDE

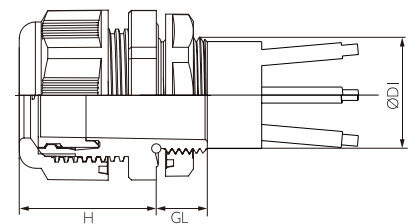
CABLE GLANDS POLYAMIDE EX E IP68



- Material: Polyamide (Nylon) - UL 94V-2
- O-ring Silicone
- Features: V2 (UL94), halogen free, not containing any cadmium phosphorus, UV-resistance and anti-aging test
- Marking:
 - Ex e IIC Gb
 - Ex tD A21 IP68
- Protection class: IP68
- Application area:
 - Zones 1, 2, 21 and 22
 - Group Gas IIA, IIB and IIC



Reference configuration. Examples: MVCG.M16.EXE.NY or MVCG.M40.EXE.NY



REFERENCES POLYAMIDE CABLE GLANDS EX/E

POLYAMIDE CABLE GLANDS EX/E	SIZE	ENTRY THREAD ISO 262	CLAMPING RANGE		H (mm)	GL (mm)	Wrench (mm)	MINIMUM
			≥	≤				
MVCG	M12	M12x1,5	3	6,5	21	8	15	50
MVCG	M16	M16x1,5	5	10	25	8	22	50
MVCG	M20	M20x1,5	10	14	28	9	27	50
MVCG	M25	M25x1,5	13	18	31	11	33	50
MVCG	M32	M32x1,5	18	25	37	11	42	25
MVCG	M40	M40x1,5	22	32	48	13	53	25
MVCG	M50	M50x1,5	32	38	49	13	60	10
MVCG	M63	M63x1,5	37	44	49	14	65 / 68	10

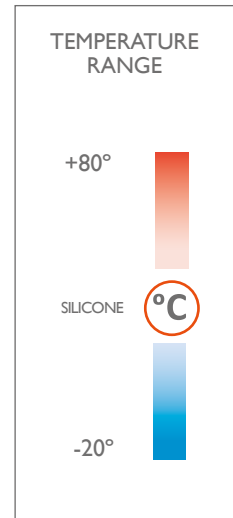


CABLE GLANDS EX D/E **ATEX**

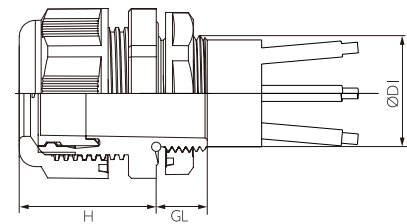
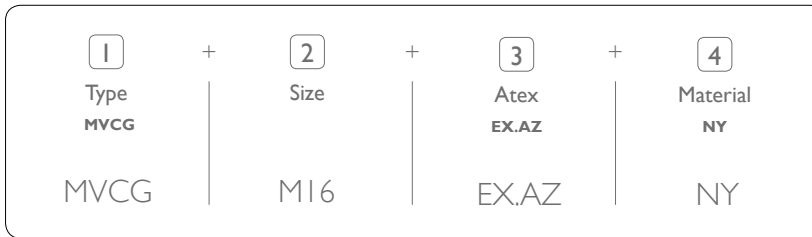
CABLE GLANDS ATEX INCREASED SECURITY POLYAMIDE EX I IP68



- Material: Polyamide (Nylon) - UL 94V-2
- O-ring Silicone
- Features: V2 (UL94), halogen free, not containing any cadmium phosphorus, UV-resistance and anti-aging test
- Marking:
 - Ex e IIC Gb
 - Ex tD A2I IP68
- Protection class: IP68
- Application area:
 - Zones 1, 2, 21 and 22
 - Group Gas IIA, IIB and IIC



Reference configuration. Examples: MVCG.M16.EX.AZ.NY or MVCG.M40.EX.AZ.NY



REFERENCES POLYAMIDE CABLE GLANDS EX/I

POLYAMIDE CABLE GLANDS EX/I	SIZE	ENTRY THREAD ISO 262	CLAMPING RANGE		H (mm)	GL (mm)	Wrench (mm)	MINIMUM
			≥	≤				
MVCG	M12	M12x1,5	3	6,5	21	8	15	50
MVCG	M16	M16x1,5	5	10	25	8	22	50
MVCG	M20	M20x1,5	10	14	28	9	27	50
MVCG	M25	M25x1,5	13	18	31	11	33	50
MVCG	M32	M32x1,5	18	25	37	11	42	25
MVCG	M40	M40x1,5	22	32	48	13	53	25
MVCG	M50	M50x1,5	32	38	49	13	60	10
MVCG	M63	M63x1,5	37	44	49	14	65 / 68	10



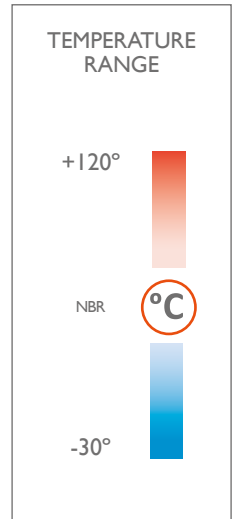
CABLE GLANDS EX D/E **ATEX**

PLUGS

STOPPER PLUG EX D/E IP66 - IP68

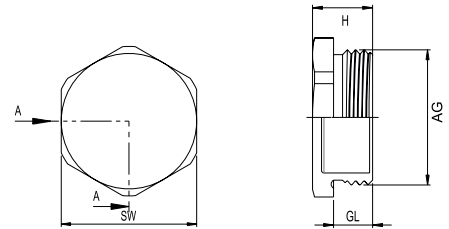


- Material:
 - Nickel-plated brass
 - Stainless steel AISI303
 - Stainless steel AISI304L
 - Stainless steel AISI316L
- O-ring: NBR
- Ultraviolet (UV) resistance
- Normative and marking:
 - II 2G Exd/e IIC Gb II 2D Ex tb IIIC Db I M2 Ex d/e I Mb
 - EN 60079-0 2009 /60079-1 2007/ 60079-3 I 2009
- Protection class: IP66 / IP68 (EN 60529)
- Application area:
 - Zones 1, 2, 21 and 22
 - Group Gas IIA, IIB and IIC



Reference configuration. Examples: MVTC.M16.S6.EX or MVTX.N21/2.ON

1	+	2	+	3	+	4
Type		Size		Material		Atex
MVTC		M16		S6		EX
		M: Entry thread N: Conic thread		ON: Nickel-plated brass S3: Stainless steel AISI303L S4: Stainless steel AISI304L S6: Stainless steel AISI 316L		



REFERENCES STOPPER PLUG						
STOPPER PLUG	CODE	SIZE	GL (MIN. mm)	H (mm)	SW (mm)	MINIMUM
MVTC	M12	M12x1,5	15	22	17	25° / 10**
MVTC	M16	M16x1,5	15	22	22	25° / 10**
MVTC	M20	M20x1,5	15	22	24	25° / 10**
MVTC	M25	M25x1,5	15	22	30	25° / 10**
MVTC	M32	M32x1,5	15	22	36	10° / 5**
MVTC	M40	M40x1,5	15	22	45	10° / 5**
MVTC	M50	M50x1,5	15	22	55	5° / 1**
MVTC	M63	M63x1,5	15	22	70	5° / 1**
MVTC	M75	M75x1,5	15	22	80	5° / 1**
MVTC	M90	M90x2	20	27	95	5° / 1**
MVTC	M100	M100x2	20	27	110	5° / 1**
MVTC	N1/4	NPT1/4"	15	22	15	25° / 10**
MVTC	N3/8	NPT3/8"	15	22	20	25° / 10**
MVTC	N1/2	NPT1/2"	15	22	24	25° / 10**
MVTC	N3/4	NPT3/4"	15	22	27	25° / 10**
MVTC	N1	NPT1"	15	22	35	10° / 5**
MVTC	N1 1/4	NPT1 1/4"	15	22	45	10° / 5**
MVTC	N1 1/2	NPT1 1/2"	15	22	50	5° / 1**
MVTC	N2	NPT2"	15	22	65	5° / 1**
MVTC	N2 1/2	NPT2 1/2"	20	27	75	5° / 1**
MVTC	N3	NPT3"	20	27	90	5° / 1**
MVTC	N4	NPT4"	20	27	115	5° / 1**

* Nickel-plated brass

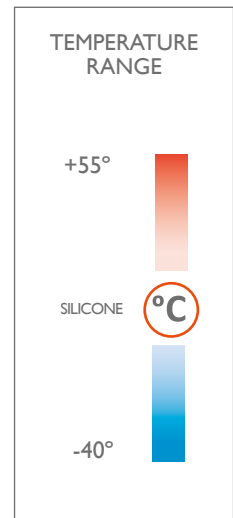
** Stainless steel AISI303L - Stainless steel AISI304L - Stainless steel AISI316L

CABLE GLANDS EX D/E **ATEX**

PLUG POLYAMIDE EX E IP66

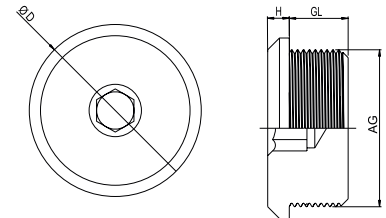


- Material: Polyamide (Nylon)
- O-ring: Silicone
- Features: water proof
- Ultraviolet (UV) resistance
- Normative and marking:
 - Ex eII Gb Ex tD A20
 - IEC - EN 60079
- Protection class: IP66
- Application area:
 - Zones 1, 2, 21 and 22
 - Group Gas IIA, IIB and IIC



Reference configuration. Examples: DVT.EX.M16.NY or DVT.EX.M40.N

1	+	2	+	3	+	4
Type		Atex		Size		Material
DVT		EX		M16		NY



REFERENCES PLUG POLYAMIDE EX/E

PLUG POLYAMIDE EX/E	SIZE	ENTRY THREAD ISO 262 (AG)	GL	H	ØD	MINIMUM
DVT	M16	M16x1,5	14	4	22	100
DVT	M20	M20x1,5	15	4	26,4	100
DVT	M25	M25x1,5	15	4	31,9	100
DVT	M32	M32x1,5	16	5,5	39,6	50
DVT	M40	M40x1,5	16	5,5	50,6	50
DVT	M50	M50x1,5	16	5,5	60,5	25
DVT	M 63	M63x1,5	19	7,5	74,8	25



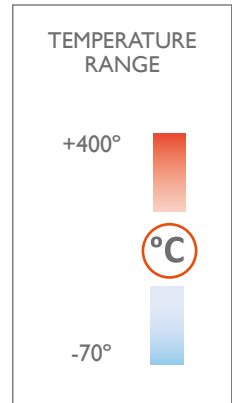
CABLE GLANDS EX D/E **ATEX**

ADAPTERS

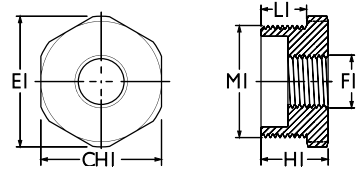
ADAPTER REDUCER EX D/E IP66 - IP68



- Material: Nickel-plated brass and stainless steel AISI 316L
- Protection class: IP66 / IP68
- Ultraviolet (UV) resistance
- Application fields: Surface - Group II • Mines - Group I
- Protection type and normative:
 - Ex db IIC • Ex eb II (gas) • Ex tb IIIC (dusts) • Ex db I • Ex eb I (mines)
 - ATEX: EN 60079-0:2012 • EN 60079-1:2014 • EN 60079-7:2015 • EN 60079-31:2014 • EN 60529:1991
 - IECEx: IEC 60079-0:2011 • IEC 60079-1:2014 • IEC 60079-7:2015 • IEC 60079-15:2010 • IEC 60079-31:2013 • IEC 60529:1989



Reference configuration. Examples: MVAD.M20N1/4.S6 or MVAD.N3/8M12.ON



CODE REFERENCES - ADAPTER REDUCER EX D/E

FEMALE - NPT (FI)										
	M20x1,5	NPT1/4"	NPT3/8"	NPT1/2"	NPT3/4"	NPT1"	NPT1 1/4"	NPT1 1/2"	NPT2"	NPT2 1/2"
MALE - METRICAL ISO 262 (M1)	M20x1,5	M20N1/4	-	-	-	-	-	-	-	-
	M25x1,5	M25N1/4	M25N3/8	M25M20	-	-	-	-	-	-
	M32x1,5	M32N1/4	M32N3/8	M32M20	M32N3/4	-	-	-	-	-
	M40x1,5	M40N1/4	M40N3/8	M40M20	M40N3/4	M40N1	-	-	-	-
	M50x1,5	M50N1/4	M50N3/8	M50M20	M50N3/4	M50N1	M50N1 1/4	-	-	-
	M63x1,5	M63N1/4	M63N3/8	M63M20	M63N3/4	M63N1	M63N1 1/4	M63N1 1/2	-	-
	M75x1,5	M75N1/4	M75N3/8	M75M20	M75N3/4	M75N1	M75N1 1/4	M75N1 1/2	M75N2	-
	M90x1,5	M90N1/4	M90N3/8	M90M20	M90N3/4	M90N1	M90N1 1/4	M90N1 1/2	M90N2	M90N2 1/2

HEMBRA - MÉTRICO ISO 262 (FI)										
	M12x1,5	M16x1,5	M20x1,5	M25x1,5	M32x1,5	M40x1,5	M50x1,5	M63x1,5	M75x1,5	
MALE - NPT (M1)	NPT3/8"	N3/8M12	-	-	-	-	-	-	-	-
	NPT1/2"	N1/2M12	N1/2M16	-	-	-	-	-	-	-
	NPT3/4"	N3/4M12	N3/4M16	N3/4M20	-	-	-	-	-	-
	NPT1"	N1M12	N1M16	N1M20	N1M25	-	-	-	-	-
	NPT1 1/4"	N1 1/4M12	N1 1/4M16	N1 1/4M20	N1 1/4M25	N1 1/4M32	-	-	-	-
	NPT1 1/2"	N1 1/2M12	N1 1/2M16	N1 1/2M20	N1 1/2M25	N1 1/2M32	N1 1/2M40	-	-	-
	NPT2"	N2M12	N2M16	N2M20	N2M25	N2M32	N2M40	N2M50	-	-
	NPT2 1/2"	N2 1/2M12	N2 1/2M16	N2 1/2M20	N2 1/2M25	N2 1/2M32	N2 1/2M40	N2 1/2M50	N2 1/2M63	-
	NPT3"	N3M12	N3M16	N3M20	N3M25	N3M32	N3M40	N3M50	N3M63	N3M75

See the code in the references table and find the sizes in the dimensions table.

DIMENSIONS ADAPTER REDUCER EX D/E (mm)				
CODE	CHI	EI	LI	HI
M20N1/4	24	26,4	15	26
M25N1/4 • M25N3/8 • M25M20	30	33	15	26
M32N1/4 • M32N3/8 • M32M20 • M32N3/4	36	39,6	15	26
M40N1/4 • M40N3/8 • M40M20 • M40N3/4 • M40N1	45	49,5	15	26
M50N1/4 • M50N3/8 • M50M20 • M50N3/4 • M50N1 • M50N1 1/4	55	60	15	29
M63N1/4 • M63N3/8 • M63M20 • M63N3/4 • M63N1 • M63N1 1/4 • M63N1 1/2	-	70	15	29
M75N1/4 • M75N3/8 • M75M20 • M75N3/4 • M75N1 • M75N1 1/4 • M75N1 1/2 • M75N2	-	80	20	34
M90N1/4 • M90N3/8 • M90M20 • M90N3/4 • M90N1 • M90N1 1/4 • M90N1 1/2 • M90N2 • M90N2 1/2	-	95	20	34

DIMENSIONS ADAPTER REDUCER EX D/E (mm)				
CODE	CHI	EI	LI	HI
N3/8M12	20	22	15	26
N1/2M12 • N1/2M16	24	26,4	18	29
N3/4M12 • N3/4M16 • N3/4M20	27	29,7	18	29
N1M12 • N1M16 • N1M20 • N1M25	36	39,6	22	33
N1 1/4M12 • N1 1/4M16 • N1 1/4M20 • N1 1/4M25 • N1 1/4M32	45	49,5	22	33
N1 1/2M12 • N1 1/2M16 • N1 1/2M20 • N1 1/2M25 • N1 1/2M32 • N1 1/2M40	50	55	24	38
N2M12 • N2M16 • N2M20 • N2M25 • N2M32 • N2M40 • N2M50	-	65	24	38
N2 1/2M12 • N2 1/2M16 • N2 1/2M20 • N2 1/2M25 • N2 1/2M32 • N2 1/2M40 • N2 1/2M50 • N2 1/2M63	-	75	28	42
N3M12 • N3M16 • N3M20 • N3M25 • N3M32 • N3M40 • N3M50 • N3M63 • N3M75	-	90	28	42

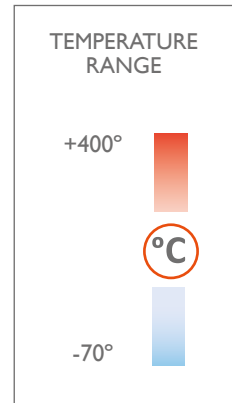
Available upon request

CABLE GLANDS EX D/E ATEX

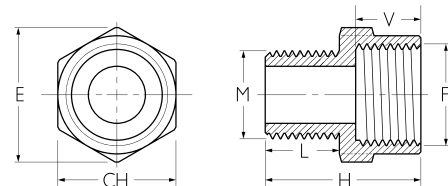
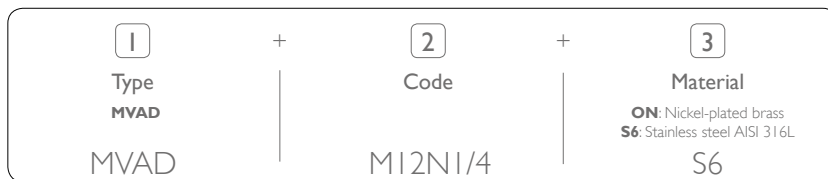
ADAPTER ENLARGER EX D/E IP66 - IP68



- Material: Nickel-plated brass and stainless steel AISI316L
- Protection class: IP66 / IP68
- ULtraviolet (UV) resistance
- Application fields: Surface - Group II • Mines - Group I
- Protection type and normative:
 - Ex db IIC • Ex eb II (gas) • Ex tb IIIC (dusts) • Ex db I • Ex eb I (mines)
 - Atex: EN 60079-0:2012 • EN 60079-1:2014 • EN 60079-7:2015 • EN 60079-31:2014 • EN 60529:1991
 - IECEx: IEC 60079-0:2011 • IEC 60079-1:2014 • IEC 60079-7:2015 • IEC 60079-15:2010 • IEC 60079-31:2013 • IEC 60529:1989



Reference configuration. Examples: MVAD.M12N1/4.S6 or MVAD.N1/4M25.ON



CODE REFERENCES - ADAPTER ENLARGER EX D/E

FEMALE - NPT (F1)											
	NPT1/4"	NPT3/8"	NPT1/2"	NPT3/4"	NPT1"	NPT1 1/4"	NPT1 1/2"	NPT2"	NPT2 1/2"	NPT3"	
MALE - METRICAL ISO 262 (M)	M12x1,5	M12N1/4	M12N3/8	M12N1/2	M12N3/4	M12N1	M12N1 1/4	M12N1 1/2	M12N2	M12N2 1/2	M12N3
	M16x1,5	M16N1/4	M16N3/8	M16N1/2	M16N3/4	M16N1	M16N1 1/4	M16N1 1/2	M16N2	M16N2 1/2	M16N3
	M20x1,5	-	M20N3/8	M20N1/2	M20N3/4	M20N1	M20N1 1/4	M20N1 1/2	M20N2	M20N2 1/2	M20N3
	M25x1,5	-	-	-	M25N3/4	M25N1	M25N1 1/4	M25N1 1/2	M25N2	M25N2 1/2	M25N3
	M32x1,5	-	-	-	-	M32N1	M32N1 1/4	M32N1 1/2	M32N2	M32N2 1/2	M32N3
	M40x1,5	-	-	-	-	-	M40N1 1/4	M40N1 1/2	M40N2	M40N2 1/2	M40N3
	M50x1,5	-	-	-	-	-	-	M50N1 1/2	M50N2	M50N2 1/2	M50N3
	M63x1,5	-	-	-	-	-	-	-	M63N2	M63N2 1/2	M63N3
	M75x1,5	-	-	-	-	-	-	-	-	M75N2 1/2	M75N3
M90x1,5	-	-	-	-	-	-	-	-	-	M90N3	

FEMALE - METRICAL ISO 262 (F)											
	M12x1,5	M16x1,5	M20x1,5	M25x1,5	M32x1,5	M40x1,5	M50x1,5	M63x1,5	M75x1,5	M90x1,5	
MALE - NPT (M)	NPT1/4"	N1/4M12	N1/4M16	N1/4M20	N1/4M25	N1/4M32	N1/4M40	N1/4M50	N1/4M63	N1/4M75	N1/4M90
	NPT3/8"	-	N3/8M16	N3/8M20	N1/4M25	N3/8M32	N3/8M40	N3/8M50	N3/8M63	N3/8M75	N3/8M90
	NPT1/2"	-	-	N1/2M20	N1/2M25	N1/2M32	N1/2M40	N1/2M50	N1/2M63	N1/2M75	N1/2M90
	NPT3/4"	-	-	-	N3/4M25	N3/4M32	N3/4M40	N3/4M50	N3/4M63	N3/4M75	N3/4M90
	NPT1"	-	-	-	-	N1M32	N1M40	N1M50	N1M63	N1M75	N1M90
	NPT1 1/4"	-	-	-	-	-	N1 1/4M40	N1 1/4M50	N1 1/4M63	N1 1/4M75	N1 1/4M90
	NPT1 1/2"	-	-	-	-	-	-	N1 1/2M50	N1 1/2M63	N1 1/2M75	N1 1/2M90
	NPT2"	-	-	-	-	-	-	-	N2M63	N2M75	N2M90
	NPT2 1/2"	-	-	-	-	-	-	-	-	N2 1/2M75	N2 1/2M90
	NPT3"	-	-	-	-	-	-	-	-	-	N3M90

See the code in the references table and find the sizes in the dimensions table.

DIMENSIONS ADAPTER ENLARGER EX D/E (mm)						
CODE	CH	E	L	V	H	
M12N1/4 • M16N1/4 • N1/4M12	20	22	15	15	33	
M12N3/8 • M16N3/8 • M20N3/8 • N1/4M16 • N3/8M16	24	26,4	15	15	33	
M12N1/2 • M16N1/2 • M20N1/2	26	28,6	15	18	36	
M12N3/4 • M16N3/4 • M20N3/4 • M25N3/4	32	35	15	18	36	
M12N1 • M16N1 • M20N1 • M25N1 • M32N1	40	44	15	22	40	
M12N1 1/4 • M16N1 1/4 • M20N1 1/4 • M25N1 1/4 • M32N1 1/4 • M40N1 1/4	50	55	15	22	40	
M12N1 1/2 • M16N1 1/2 • M20N1 1/2 • M25N1 1/2 • M32N1 1/2 • M40N1 1/2 • M50N1 1/2	55	60	15	24	42	
M12N2 • M16N2 • M20N2 • M25N2 • M32N2 • M40N2 • M50N2 • M63N2	-	70	15	24	42	
M12N2 1/2 • M16N2 1/2 • M20N2 1/2 • M25N2 1/2 • M32N2 1/2 • M40N2 1/2 • M50N2 1/2 • M63N2 1/2 • M75N2 1/2	-	80	15	28	46	
M12N3 • M16N3 • M20N3 • M25N3 • M32N3 • M40N3 • M50N3 • M63N3	-	95	15	28	46	
M75N3 • M90N3	-	95	20	28	51	
N1/4M20 • N3/8M20	26	28,6	15	15	33	
N1/4M25 • N1/4M32	32	35	15	15	33	
N1/4M32 • N3/8M32	40	44	15	45	33	
N1/4M40 • N3/8M40	45	49,5	15	15	33	

DIMENSIONS ADAPTER ENLARGER EX D/E (mm)						
CODE	CH	E	L	V	H	
N1/4M50 • N3/8M50	55	60	15	15	33	
N1/4M63 • N3/8M63	-	70	15	15	33	
N1/4M75 • N3/8M75	-	85	15	20	38	
N1/4M90 • N3/8M90	-	100	15	20	38	
N1/2M20	26	28,6	18	15	36	
N1/2M25 • N3/4M25	32	35	18	15	36	
N1/2M32 • N3/4M32	40	44	18	15	36	
N1M32	40	44	22	15	40	
N1/2M40 • N3/4M40	45	49,5	18	15	36	
N1M40 • N1 1/4M40	45	49,5	22	15	40	
N1/2M50 • N3/4M50	55	60	18	15	36	
N1M50 • N1 1/4M50	55	60	22	15	40	
N1 1/2M50	55	60	24	15	42	
N1/2M63 • N3/4M63	-	70	18	15	36	
N1M63 • N1 1/4M63	-	70	22	15	40	
N1 1/2M63 • N2M63	-	70	24	15	42	
N1/2M75 • N3/4M75	-	85	18	20	41	
N1M75 • N1 1/4M75	-	85	22	20	45	
N1 1/2M75 • N2M75	-	85	24	20	47	
N2 1/2M75	-	85	28	20	51	
N1 1/2M90 • N3/4M90	-	100	18	20	41	
N1M90 • N1 1/4M90	-	100	22	20	45	
N1 1/2M90 • N2M90	-	100	24	20	47	
N2 1/2M90 • N3M90	-	100	28	20	51	

Available upon request

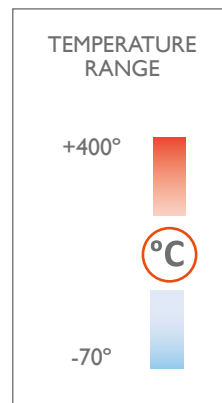
CABLE GLANDS EX D/E ATEX

ENLARGER - REDUCER

REDUCER EX D/E IP66 - IP68

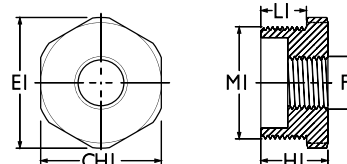


- Material: Nickel-plated brass and stainless steel AISI316L
- Protection class: IP66 / IP68
- Ultraviolet (UV) resistance
- Application fields: Surface - Group II • Mines - Group I
- Protection type and normative:
 - Ex db IIC • Ex eb II (gas) • Ex tb IIIC (dusts) • Ex db I • Ex eb I (mines)
 - ATEX: EN 60079-0:2012 • EN 60079-1:2014 • EN 60079-7:2015 • EN 60079-31:2014 • EN 60529:1991
 - IECEx: IEC 60079-0:2011 • IEC 60079-1:2014 • IEC 60079-7:2015 • IEC 60079-15:2010 • IEC 60079-31:2013 • IEC 60529:1989



Reference configuration, Examples: MVAD.MI6MI2.S6 or MVAD.NI1/4N3/8.ON

1 Type MVADI	+	2 Code MI6MI2	+	3 Material ON: Nickel-plated brass S6: Stainless steel AISI 316L S6
--------------------	---	---------------------	---	---



CODE REFERENCES - REDUCER EX D/E

FEMALE - METRICAL ISO 262 (F1)										
MALE - METRICAL ISO 262 (M1)	M12x1,5	M16x1,5	M20x1,5	M25x1,5	M32x1,5	M40x1,5	M50x1,5	M63x1,5	M75x1,5	
M16x1,5	M16MI2	-	-	-	-	-	-	-	-	-
M20x1,5	M20MI2	M20MI6	-	-	-	-	-	-	-	-
M25x1,5	M25MI2	M25MI6	M25M20	-	-	-	-	-	-	-
M32x1,5	M32MI2	M32MI6	M32M20	M32M25	-	-	-	-	-	-
M40x1,5	M40MI2	M40MI6	M40M20	M40M25	M40M32	-	-	-	-	-
M50x1,5	M50MI2	M50MI6	M50M20	M50M25	M50M32	M50M40	-	-	-	-
M63x1,5	M63MI2	M63MI6	M63M20	M63M25	M63M32	M63M40	M63M50	-	-	-
M75x1,5	M75MI2	M75MI6	M75M20	M75M25	M75M32	M75M40	M75M50	M75M50	-	-
M90x1,5	M90MI2	M90MI6	M90M20	M90M25	M90M32	M90M40	M90M50	M90M50	M90M75	-

FEMALE - NPT (F1)										
MALE - NPT (M1)	NPT1/4"	NPT3/8"	NPT1/2"	NPT3/4"	NPT1"	NPT1 1/4"	NPT1 1/2"	NPT2"	NPT2 1/2"	
NPT1/2"	N1/2N1/4	-	-	-	-	-	-	-	-	-
NPT3/4"	N3/4N1/4	N3/4N3/8	N3/4N1/2	-	-	-	-	-	-	-
NPT1"	N1N1/4	N1N3/8	N1N1/2	N1N3/4	-	-	-	-	-	-
NPT1 1/4"	N11/4N1/4	N11/4N3/8	N11/4N1/2	N11/4N3/4	N11/4N1	-	-	-	-	-
NPT1 1/2"	N11/2N1/4	N11/2N3/8	N11/2N1/2	N11/2N3/4	N11/2N1	N11/2N11/4	-	-	-	-
NPT2"	N2N1/4	N2N3/8	N2N1/2	N2N3/4	N2N1	N2N11/4	N2N11/2	-	-	-
NPT2 1/2"	N21/2N1/4	N21/2N3/8	N21/2N1/2	N21/2N3/4	N21/2N1	N21/2N11/4	N21/2N11/2	N21/2N2	-	-
NPT3"	N3N1/4	N3N3/8	N3N1/2	N3N3/4	N3N1	N3N11/4	N3N11/2	N3N2	N3N21/2	-

See the code in the references table and find the sizes in the dimensions table.

DIMENSIONS REDUCER EX D/E (mm)				
CODE	CHI	EI	LI	HI
M16MI2	20	22	15	26
M20MI2 • M20MI6	24	26,4	15	26
M25MI2 • M25MI6 • M25M20	30	33	15	26
M32MI2 • M32MI6 • M32M20 • M32M25	36	39,6	15	26
M40MI2 • M40MI6 • M40M20 • M40M25 • M40M32	45	49,5	15	26
M50MI2 • M50MI6 • M50M20 • M50M25 • M50M32 • M50M40	55	60	15	29
M63MI2 • M63MI6 • M63M20 • M63M25 • M63M32 • M63M40 • M63M50	-	70	15	29
M75MI2 • M75MI6 • M75M20 • M75M25 • M75M32 • M75M40 • M75M50 • M75M50	-	80	20	34
M90MI2 • M90MI6 • M90M20 • M90M25 • M90M32 • M90M40 • M90M50 • M90M50 • M90M75	-	95	20	34

DIMENSIONS REDUCER EX D/E (mm)				
CODE	CHI	EI	LI	HI
N11/2N1/4	24	26,4	18	29
N3/4N1/4 • N3/4N3/8 • N3/4N1/2	27	29,7	18	29
N1N1/4 • N1N3/8 • N1N1/2 • N1N3/4	36	39,6	22	33
N11/4N1/4 • N11/4N3/8 • N11/4N1/2 • N11/4N3/4 • N11/4N1	45	49,5	22	33
N11/2N1/4 • N11/2N3/8 • N11/2N1/2 • N11/2N3/4 • N11/2N1 • N11/2N11/4	50	55	24	38
N2N1/4 • N2N3/8 • N2N1/2 • N2N3/4 • N2N1 • N2N11/4 • N2N11/2	-	65	24	38
N21/2N1/4 • N21/2N3/8 • N21/2N1/2 • N21/2N3/4 • N21/2N1 • N21/2N11/4 • N21/2N11/2 • N21/2N2	-	75	28	42
N3N1/4 • N3N3/8 • N3N1/2 • N3N3/4 • N3N1 • N3N11/4 • N3N11/2 • N3N2 • N3N21/2	-	90	28	42

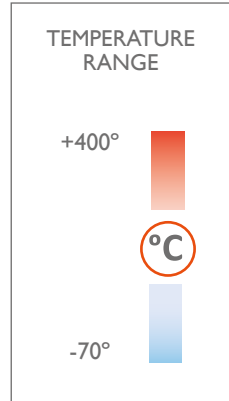
Available upon request

CABLE GLANDS EX D/E ATEX

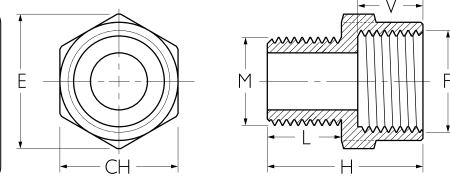
ENLARGER EX D/E IP66 - IP68



- Material: Nickel-plated brass and stainless steel AISI316L
- Protection class: IP66 / IP68
- ULtraviolet (UV) resistance
- Application fields: Surface - Group II • Mines - Group I
- Protection type and normative:
 - Ex db IIC • Ex eb II (gas) • Ex tb IIIC (dusts) • Ex db I • Ex eb I (mines)
 - Atex: EN 60079-0:2012 • EN 60079-1:2014 • EN 60079-7:2015 • EN 60079-31:2014 • EN 60529:1991
 - IECEx: IEC 60079-0:2011 • IEC 60079-1:2014 • IEC 60079-7:2015 • IEC 60079-15:2010 • IEC 60079-31:2013 • IEC 60529:1989



Reference configuration. Examples: MVAD.M12M16.S6 or MVAD.N1/4N3/8.ON



CODE REFERENCES - ENLARGER EX D/E

FEMALE - METRICAL ISO 262 (F)											
	M12x1,5	M16x1,5	M20x1,5	M25x1,5	M32x1,5	M40x1,5	M50x1,5	M63x1,5	M75x1,5	M90x1,5	
MALE - METRICAL ISO 262 (M)	M12x1,5	M16x1,5	M20x1,5	M25x1,5	M32x1,5	M40x1,5	M50x1,5	M63x1,5	M75x1,5	M90x1,5	
	M12M12	M12M16	M12M20	M12M25	M12M32	M12M40	M12M50	M12M63	M12M75	M12M90	
	M16M16	M16M20	M16M25	M16M32	M16M40	M16M50	M16M63	M16M75	M16M90		
	M20M20	M20M25	M20M32	M20M40	M20M50	M20M63	M20M75	M20M90			
	M25M25	M25M32	M25M40	M25M50	M25M63	M25M75	M25M90				
	M32M32	M32M40	M32M50	M32M63	M32M75	M32M90					
	M40M40	M40M50	M40M63	M40M75	M40M90						
	M50M50	M50M63	M50M75	M50M90							
	M63M63	M63M75	M63M90								
	M75M75	M75M90									
	M90M90										

FEMALE - NPT (F)											
	NPT 1/4"	NPT 3/8"	NPT 1/2"	NPT 3/4"	NPT 1"	NPT 1 1/4"	NPT 1 1/2"	NPT 2"	NPT 2 1/2"	NPT 3"	
MALE - NPT (M)	NPT 1/4"	NPT 3/8"	NPT 1/2"	NPT 3/4"	NPT 1"	NPT 1 1/4"	NPT 1 1/2"	NPT 2"	NPT 2 1/2"	NPT 3"	
	N1/4N1/4	N1/4N3/8	N1/4N1/2	N1/4N3/4	N1/4N1	N1/4N1 1/4	N1/4N1 1/2	N1/4N2	N1/4N2 1/2	N1/4N3	
	N3/8N1/4	N3/8N3/8	N3/8N1/2	N3/8N3/4	N3/8N1	N3/8N1 1/4	N3/8N1 1/2	N3/8N2	N3/8N2 1/2	N3/8N3	
	N1/2N1/4	N1/2N3/8	N1/2N1/2	N1/2N3/4	N1/2N1	N1/2N1 1/4	N1/2N1 1/2	N1/2N2	N1/2N2 1/2	N1/2N3	
	N3/4N1/4	-	-	N3/4N3/4	N3/4N1	N3/4N1 1/4	N3/4N1 1/2	N3/4N2	N3/4N2 1/2	N3/4N3	
	N1N1/4	-	-	-	N1N1	N1N1 1/4	N1N1 1/2	N1N2	N1N2 1/2	N1N3	
	N1 1/4N1 1/4	-	-	-	-	N1 1/4N1 1/4	N1 1/4N1 1/2	N1 1/4N2	N1 1/4N2 1/2	N1 1/4N3	
	N1 1/2N1 1/2	-	-	-	-	-	N1 1/2N1 1/2	N1 1/2N2	N1 1/2N2 1/2	N1 1/2N3	
	N2N2	-	-	-	-	-	-	N2N2	N2N2 1/2	N2N3	
	N2 1/2N2 1/2	-	-	-	-	-	-	-	N2 1/2N2 1/2	N2 1/2N3	
	N3N3	-	-	-	-	-	-	-	-	N3N3	

See the code in the references table and find the sizes in the dimensions table.

DIMENSIONS ENLARGER EX D/E (mm)						
CODE	CH	E	L	V	H	
M12M12 • N1/4N1/4 • N3/8N1/4	20	22	15	15	33	
M12M16 • M16M16 • N1/4N3/8 • N3/8N3/8	24	26,4	15	15	33	
M12M20 • M16M20 • M20M20	26	28,6	15	15	33	
M12M25 • M16M25 • M20M25 • M25M25	32	35	15	15	33	
M12M32 • M16M32 • M20M32 • M25M32 • M32M32	40	44	15	45	33	
M12M40 • M16M40 • M20M40 • M25M40 • M32M40 • M40M40	45	49,5	15	15	33	
M12M50 • M16M50 • M20M50 • M25M50 • M32M50 • M40M50 • M50M50	55	60	15	15	33	
M12M63 • M16M63 • M20M63 • M25M63 • M32M63 • M40M63 • M50M63 • M63M63	-	70	15	15	33	
M12M75 • M16M75 • M20M75 • M25M75 • M32M75 • M40M75 • M50M75 • M63M75	-	85	15	20	38	
M12M90 • M16M90 • M20M90 • M25M90 • M32M90 • M40M90 • M50M90 • M63M90	-	100	15	20	38	
M75M75	-	85	20	20	43	
M75M90 • M90M90	-	100	20	20	43	
N1/2N3/8	24	26,4	18	15	36	
N1/4N1/2 • N3/8N1/2	26	28,6	15	18	36	
N1/2N1/2	26	28,6	18	18	39	
N1/4N3/4 • N3/8N3/4	32	35	15	18	36	
N1/4N1 • N3/8N1	40	44	15	22	40	

DIMENSIONS ENLARGER EX D/E (mm)						
CODE	CH	E	L	V	H	
N1/4N1 1/4 • N3/8N1 1/4	50	55	15	22	40	
N1/4N1 1/2 • N3/8N1 1/2	55	60	15	24	42	
N1/4N2 • N3/8N2	-	70	15	24	42	
N1/4N2 1/2 • N3/8N2 1/2	-	80	15	28	46	
N1/4N3 • N3/8N3	-	95	15	28	46	
N1/2N1/2	26	28,6	18	18	39	
N1/2N3/4 • N3/4N3/4	32	35	18	18	39	
N1/2N1 • N3/4N1	40	44	18	22	43	
N1/2N1 1/4 • N3/4N1 1/4	50	55	18	22	43	
N1/2N1 1/2 • N3/4N1 1/2	55	60	18	24	45	
N1/2N2 • N3/4N2	-	70	18	24	45	
N1/2N2 1/2 • N3/4N2 1/2	-	80	18	28	49	
N1/2N3 • N3/4N3	-	95	18	28	49	
N1N1	40	44	22	22	47	
N1N1 1/4 • N1 1/4N1 1/4	50	55	22	22	47	
N1N1 1/2 • N1 1/4N1 1/2	55	60	22	24	49	
N1N2 • N1 1/4N2	-	70	22	24	49	
N1N2 1/2 • N1 1/4N2 1/2	-	80	22	28	52	
N1N3 • N1 1/4N3	-	95	22	28	52	
N1 1/2N1 1/2	55	60	24	24	51	
N1 1/2N2 • N2N2	-	70	24	24	51	
N1 1/2N2 1/2 • N2N2 1/2	-	80	24	28	55	
N1 1/2N3 • N2N3	-	85	24	28	55	
N2 1/2N2 1/2	-	80	28	28	59	
N2 1/2N3 • N3N3	-	95	28	28	59	

Available upon request

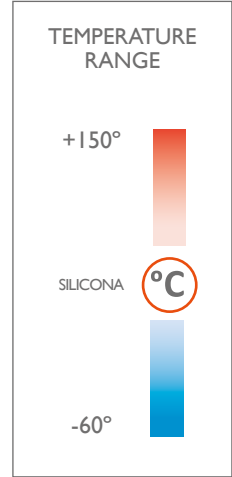
CABLE GLANDS EX D/E **ATEX**

VALVE

AUTOMATIC BREATHER AND DRAINAGE HAZARDOUS AREA VALVES ATEX IP66

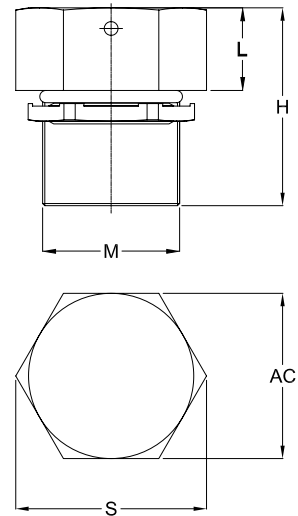


- Valves are suitable to be used on increased safety, intrinsically safety or watertight enclosures to facilitate the elimination of condensation or vapors developed inside.
We recommended minimum 2 units per enclosure
- Material: stainless steel AISI316 o Nickel-plated brass
- Internal filter: stainless steel
- Gaskets: silicone
- Internal seeger: stainless steel
- Ultraviolet (UV) resistance
- Normative and marking:
 - o II 2GD Ex eb IIC Gb
 - o Ex tb IIIC Db
 - o EN 60079-14
 - o IEC 60079-0: 2011 / 60079-7:2015 / IEC 60079-31: 2013
 - o Directive 2014/34/UE
 - o EN 60079-0: 2012 / 60079-7: 2015 / 60079-31: 2014
- Protection class: IP66



HOW VALVE WORKS

IP66 Waterproof Anti-condensation valve to facilitate air circulation by convection inside the modules, preventing the formation of condensation. Pressure differences in enclosures with a high degree of protection from moisture and dust, are the result of fluctuations in internal and external temperature. If negative pressure or vacuum dust and moisture can be absorbed by the sealed doors and can enter the hazardous area enclosure. Because moisture can not escape, condensation can occur. Allows to regulate the pressure to prevent condensation following an increase in the internal temperature.



REFERENCES AUTOMATIC BREATHER AND DRAINAGE HAZARDOUS AREA VALVES ATEX								
REFERENCES	USE	MATERIAL	DIMENSIONS (mm)					MINIMUM
			M	AC	S	H	L	
MVVAC04B.M20.S6.EX	Breather	Stainless steel	M20x1,5	24	28	26	12	20
MVVAC04D.M20.S6.EX	Drainage	Stainless steel	M20x1,5	24	28	26	12	20
MVVAC04B.M20.ON.EX	Breather	Latón niquelado	M20x1,5	24	28	26	12	50
MVVAC04D.M20.ON.EX	Drainage	Stainless steel	M20x1,5	24	28	26	12	50

CABLE GLANDS EX D/E **ATEX**

ACCESSORIES

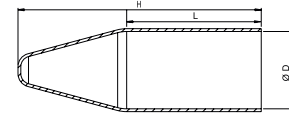
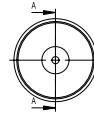
SHROUD IP66 - IP68



- Material:
 - TPV
 - PVC
 - LSF
- Ultraviolet (UV) resistance
- Protection class: IP66 / IP68 (EN 60529)
- Temperature range: -20°C to +80°C

Reference configuration. Example: MVSHR16LSF

①	+	②	+	③
Type		Size		Material
MVSHR		16		TPV:TPV PVC:PVC LSF:LSF
MVSHR		16		LSF



REFERENCES SHROUD

SHROUD	SIZE	ØD (mm)	H (mm)	L (mm)
MVSHR	16	25	100	60
MVSHR	20	32	110	65
MVSHR	25	41	130	70
MVSHR	32	49	145	77
MVSHR	40	60	170	85
MVSHR	50S	65	155	86
MVSHR	50	75	175	92
MVSHR	63S	81	180	92
MVSHR	63	86	180	92
MVSHR	75S	100	220	115
MVSHR	75	110	220	115

Available upon request

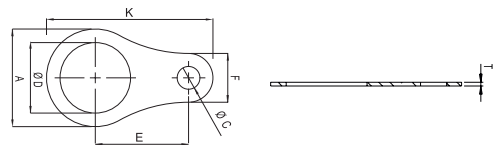
EARTH TAG



- Material:
 - Nickel-plated brass
 - Stainless steel AISI303L
- Ultraviolet (UV) resistance
- Temperature range: -40°C to +100°C

Reference configuration. Example: MVTTI6ON

①	+	②	+	③
Type		Size		Material
MVTT		16		ON: Nickel-plated brass S3: Stainless steel AISI303L
MVTT		16		ON



REFERENCES EARTH TAG

EARTH TAG	SIZE	A (mm)	ØD (mm)	ØC (mm)	F (mm)	K (mm)	E (mm)	T (mm)
MVTT	16	25,4	16,5	6,5	12,5	49	30	1
MVTT	20	27	20,5	6,5	10,2	51,6	33	1
MVTT	25	35	25,5	6,5	13,5	60	35,5	1
MVTT	32	45	32,5	10,5	22,5	76,75	43	1
MVTT	40	53,5	40,5	10,5	23,6	83,5	45	1
MVTT	50	65	50,5	10,5	29,5	105,25	58	1
MVTT	63	82	63,5	10,5	29,5	122,75	67	1
MVTT	75	96	75,5	6,5	24	-	73	1,5
MVTT	90	114	90,5	6,5	37	-	86	1,5

Available upon request



EX CABLE GLANDS FOR HAZARDOUS AREAS



SOLUTIONS FOR HAZARDOUS AREA



With over 50 years of experience in design, manufacture and supply of electrical high quality Atex & IECEX solutions

Atex Delvalle adapts to our clients' needs by offering Hazardous Area enclosures and boxes on demand. They are adapted to your specific requirements of installation and assembly, up to the last detail.

Atex Delvalle designs and manufactures a range of Hazardous Area enclosures; junction and terminal boxes, pressurized, flameproof Ex d and increased Safety Ex e Atex & IECEX compliant enclosures.



ATEX CABLE GLANDS



MOTOR STARTER & LOAD DISCONNECT SWITCHES



ATEX TERMINAL & JUNCTION BOXES



ATEX LIGHTING FIXTURE

HMI INDUSTRIAL PANELS WORKSTATIONS



FLAMEPROOF ENCLOSURES & PULLING BOXES



CONTROL STATIONS & DISTRIBUTION BOXES

Atex control boxes (Contrex Series), they are specially designed to perform checks, maneuvers and as actuators in explosive atmospheres. They have a rugged, corrosion system and finished in stainless steel or GRP polyester. It allows you to perform maneuvers and controls at the machine in hazardous areas and take programming and automation in a safe area. Offering customers a great combination of possibilities and flexibility. Select the component that best suits your operator panels, keypads, mushrooms, switches, ammeters... and you assemble all with Atex certified, Ex & IECEx and UL.



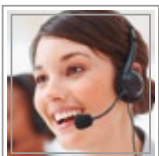
ENCLOSURES FOR CORROSION ENVIRONMENTS

PRESSURIZED PANELS & ATEX PURGE





HAZARDOUS AREA SOLUTIONS ATEX E IECEX



Paso del Prao, 6. 01320 Oyón (Álava). Spain
Telf. +34 945 601 381
atex@atexdelvalle.com | www.atexdelvalle.com

Contact us, we will be available at any time